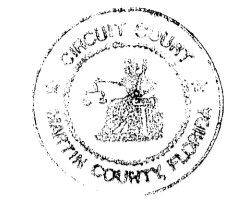


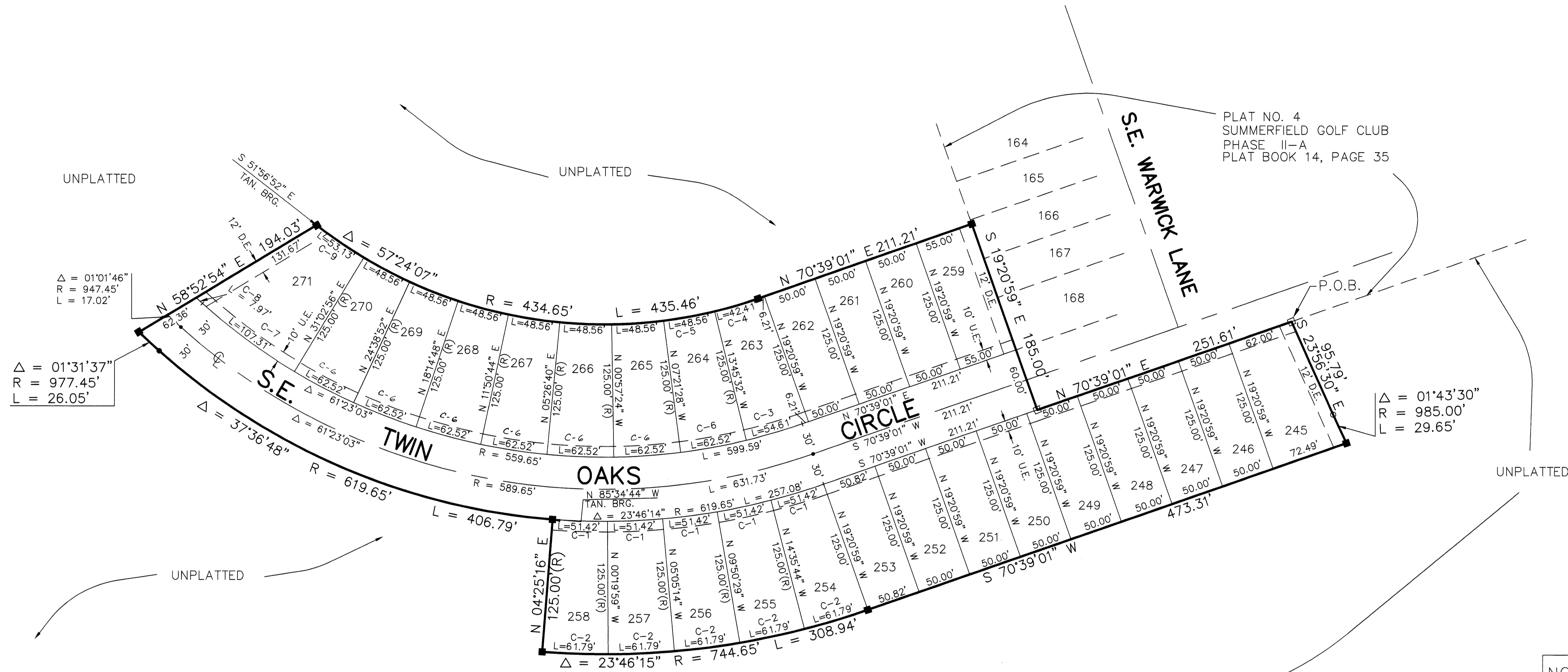
PLAT NO. 5
SUMMERFIELD GOLF CLUB PHASE III-A, A P.U.D.
 LYING IN SECTION 35, TOWNSHIP 38 SOUTH, RANGE 41 EAST
 MARTIN COUNTY, FLORIDA

I hereby certify that this plat was filed for record in plat bk 14 page 55, Martin County, Florida, Public records this 29th day of Oct., 1998



Marsha Sellers
 Circuit Court
 Martin County,
 Florida

By: Sherry Copus D.C.
 Deputy Clerk



NOTICE: THERE MAY BE ADDITIONAL RESTRICTIONS THAT ARE NOT RECORDED ON THIS PLAT THAT MAY BE FOUND IN THE PUBLIC RECORDS OF THIS COUNTY.

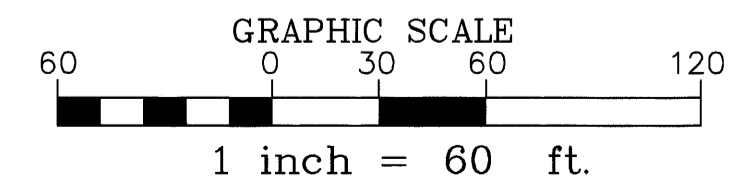
NOTES:
 THIS PLAT, AS RECORDED IN ITS ORIGINAL FORM IN THE PUBLIC RECORDS, IS THE OFFICIAL DEPICTION OF THE SUBDIVIDED LANDS DESCRIBED HEREON AND WILL IN NO CIRCUMSTANCES BE SUPPLANTED IN AUTHORITY BY ANY OTHER FORM OF THE PLAT, WHETHER GRAPHIC OR DIGITAL.
 IN THE EVENT THAT MARTIN COUNTY DISTURBS THE SURFACE OF A PRIVATE STREET DUE TO MAINTENANCE, REPAIR OR REPLACEMENT OF A PUBLIC IMPROVEMENT LOCATED THEREIN, THEN THE COUNTY SHALL BE RESPONSIBLE FOR RESTORING THE STREET SURFACES ONLY TO THE EXTENT WHICH WOULD BE REQUIRED IF THE STREET WERE A PUBLIC STREET, IN ACCORDANCE WITH COUNTY SPECIFICATIONS.

BASE OF BEARINGS: THE SOUTH LINE OF SECTION 35, TOWNSHIP 38 SOUTH, RANGE 41 EAST HAVING A BEARING OF N 89°50'53" E AND ALL OTHER BEARINGS SHOWN HEREON ARE RELATIVE THERETO.

CURVE DATA

CURVE	RADIUS	LENGTH	CHORD	DELTA
C-1	619.65'	51.42'	51.40'	04°45'15"
C-2	744.65'	61.79'	61.77'	04°45'15"
C-3	559.65'	54.61'	54.59'	05°35'27"
C-4	434.65'	42.41'	42.40'	05°35'27"
C-5	434.65'	48.56'	48.53'	06°24'04"
C-6	559.65'	62.52'	62.49'	06°24'04"
C-7	559.65'	107.31'	107.14'	10°59'09"
C-8	917.45'	7.97'	7.97'	00°29'51"
C-9	434.65'	53.13'	53.10'	07°00'12"

- LEGEND**
- U.E. = UTILITY EASEMENT
 - D.E. = DRAINAGE EASEMENT
 - = PERMANENT CONTROL POINT
 - = PERMANENT REFERENCE MONUMENT (FOUND) LS 3690
 - = PERMANENT REFERENCE MONUMENT (SET) LS 3690
 - = IRON ROD & CAP PSM 3690 (FOUND)
 - = IRON ROD & CAP PSM 3690 (SET)
 - ⊙ = CENTERLINE
 - FD. = FOUND
 - P.O.B. = POINT OF BEGINNING
 - (R) = RADIAL BEARING
 - R/W = RIGHT-OF-WAY
 - Δ = CENTRAL ANGLE
 - R = RADIUS
 - L = ARC LENGTH



ALLEN E. BECK
 PROFESSIONAL LAND SURVEYORS
 608 S.W. BAYSHORE BLVD.
 PORT ST. LUCIE, FLORIDA 34983
 (561) 340-1432

SCALE 1" = 60' JOB NO. 97-3427
 SHEET 2 OF 2